



# Introduction to Cleft Teams

---

Cleft team job titles and what they mean

---



## Paediatric or Paediatrician

A doctor or nurse who is trained to look after babies and children.



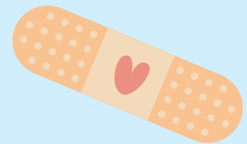
## Consultant

A Dr who had extra training to offer expert help in different parts of the body with a medical condition.



## Cleft Nurse

A Cleft nurse knows all about cleft lip and palate. They help parents and carers when they find out their baby will have a cleft and after the baby is born.



## Cleft Surgeon

A cleft surgeon has done a lot of training to operate on people born with a cleft. A cleft surgeon will have repaired your cleft when you were a baby.



## Anesthetist

An Anaesthetist is a special doctor who gives anesthetic medicine that sends you into a deep sleep while you are having an operation and makes sure you don't feel a thing.



# The Dental Team

All people born with a cleft should see a local general dentist for dental care.

## Specialist in Paediatric Dentistry

This is a dentist who looks after children's teeth.



## Consultant Orthodontist

An orthodontist will look at how your jaw grows, how your teeth develop, and how your teeth line up.



## Restorative Dentist

A restorative dentist works mostly with adult patients to repair or replace damaged or missing teeth.



## Maxillofacial (Max Fax) Surgeon

A Maxillofacial Surgeon' (or 'Max Fax Surgeon' for short) is a surgeon who specialises in operating on the face and jaws.



## Speech and Language Therapist (SLT)

Speech and Language Therapists (SLTs) can help people learn to make certain sounds or change how these sounds are made.



## ENT (Ear, Nose and Throat) Specialist or Surgeon

An ENT Specialist is an expert in conditions and illnesses to do with the ears, nose and throat.

## Audiological Physician, Paediatric Audiologist

An 'Audiologist' is a kind of doctor who diagnoses and treats hearing issues. They test and treat you when necessary.



Glue Ear is caused by a blocked ear tube, making it hard to hear and causing earaches.

Grommets are tiny plastic tubes placed in the eardrum and can help stop earaches.



Hearing aids come in several different kinds and are a long-term way to help you hear.

Other treatments can include using decongestants or nasal sprays to clear out the middle ears.

## Cleft Coordinator and Cleft Administration (Admin) Team

The administration team is the people who make appointments for patients.



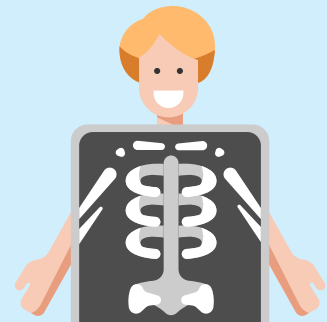
## Clinical Psychologist

A Clinical Psychologist helps people talk through their worries and use their training to help them feel better.



## Radiologist

A radiologist is a doctor trained to give people x-rays. These are special pictures of the inside of your body.



## Medical Photography

Medical photography is a way of taking pictures that will be useful to your doctors.

## Clinical Geneticist

‘Genes’ are traits that are passed on (‘inherited’) from our parents, such as the colour of our eyes. A ‘Clinical Geneticist’ is a kind of doctor who specialises in what genes we have.



# How to pronounce these job titles

Anaesthetist (uh-nees-tha-tist)

Anaesthetic (ah-nuss-thet-ick)

Audiologist (aw-dee-ol-uh-jist)

Audiological (aw-dee-ol-uh-jee-kul)

Consultant (kon-sull-tant)

Geneticist (jen-eh-teh-sist)

Maxillofacial (max-ill-oh-fay-shul)

Orthodontist (orth-oh-don-tist)

Paediatric (pee-dee-ah-trick)

Paediatrician (pee-dee-ah-trish-un)

Physician (fizz-ish-an)

Radiologist (ray-dee-oll-owe-jist)



*Good luck on your journey from  
all at team CLAPA!*

**Good  
Luck!**