

# South London and Surrey Branch Spring 2016 Newsletter

Welcome to the CLAPA South London and Surrey branch newsletter Winter 2016. This is your opportunity to find out what has been and is happening within your branch.

We're here to support you, so don't hesitate to get in touch via our Facebook page, <https://www.facebook.com/SLASBCLAPA>, or via email on [slasbclapa@yahoo.co.uk](mailto:slasbclapa@yahoo.co.uk).

## Upcoming Branch Events

Here's some dates for your diary!

### Saturday 21st May

#### CLAPA Sponsored Walk, Hyde Park, London

Along with the other South East CLAPA regions, we'll be taking over Hyde Park to raise funds and awareness for CLAPA. Tickets are £5 and available now via Eventbrite.

### Sunday 12th June

#### Bocketts Family Fun Day



Our annual Summer Fun Day at Bocketts Farm, near Leatherhead. We'll have tractor rides, animal handling and a picnic on the farm. More details and tickets will be available shortly.

### September (TBC)

#### Fundraising Quiz Evening

Put a team together and pit your wits against our Quizmaster and fellow branch members to raise funds for CLAPA. Details will be finalised and advertised shortly.

### Saturday 1st October

#### Forum with South Thames Cleft Team

An informal event with the South Thames Cleft Service at the Evelina, to give parents and children an insight into what they can potentially expect from their treatment once the initial lip and palate repairs are complete.

### Saturday 10th December

#### South London and Surrey Christmas Party

The annual Christmas party is back and better

than ever. Join us for games, drinks and the traditional Christmas buffet, plus a visit from the big man in red himself - Santa!



Don't forget to check our Facebook page and the CLAPA emails for details nearer the time

## SLASB Fundraising Aug 2015-Feb 2016

### Christmas Party 2015

Our annual Christmas Party took place on 28th November 2015 and thanks to eager participation in the raffle and generous donations on the door raised £652 for CLAPA. Thank you to everyone who attended.

### Beachy Head Marathon



On 26th October, Angela Thorpe ran the notoriously hilly and windy Beachy Head Marathon to raise funds for CLAPA. She also organised a quiz night, raising over £1,000 across the two events, an absolutely brilliant total! A massive well done to Angela!

### Upcoming Fundraisers

Rosie Biggs is running the London Marathon on 24th April and Samia Zreik will be running the annual London Vitality 10k in July, both for CLAPA.

Both ladies are mothers to children with cleft and would greatly appreciate any support. If you wish to donate, then go to [virginmoneygiving.com](http://virginmoneygiving.com) and type in the name of the relevant fundraiser.

## Parent Contacts

Parent Contacts in the SLASB region are available to provide support to anyone affected by cleft, not just those with a recent diagnosis. If you want to get advice, or just chat, feel free to contact any of those listed below.



### Clare Lomasney

I live with my husband and two boys Patrick and Alex. Patrick was born in 2005 with a unilateral cleft lip and gum notch and has had all his treatment at Salisbury Hospital.

[clare.lomasney@yahoo.co.uk](mailto:clare.lomasney@yahoo.co.uk)

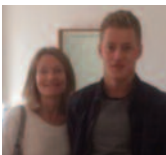


### Max de Grunwald

I'm dad to lively Evie, who was born with unilateral cleft lip and palate in summer 2012 and am happy to talk to you about how cleft affects dads

and families as a whole. We had some pretty anxious times during Evie's operations, but the surgery was amazing and Evie now has the most mischievous smile in South West London.

[max\\_degrunwald@hotmail.com](mailto:max_degrunwald@hotmail.com)



### Stephanie Lawson

I'm mum to 21 year old twin boys. Joshua was born with a bilateral cleft lip and alveolus. He had his first lip repair at seven months, and

has had several operations over the years including, bone grafting, revision of scars and orthognathic surgery in 2013. He has now completed restorative dentistry, and is delighted with the results.

[stephanielawson.clapa@btinternet.com](mailto:stephanielawson.clapa@btinternet.com)

### Melanie Polczynski

I have 2 daughters with clefts, one with a unilateral incomplete cleft lip and one with a unilateral incomplete cleft lip and palate. I was also born with a cleft.

[sundgel2@gmail.com](mailto:sundgel2@gmail.com)



### Yin Jones

Hello, my name is Yin, married to Arwel and our baby Hannah was born in 2011 with a cleft palate and Pierre Robin Sequence. Hannah was

fed via a NG tube for 10 months and had a nasal prong for 6 months. Hannah had her operation in February 2012. I'm a full time mum and enjoy meeting friends for tea and cake!

[yin.jones@btinternet.com](mailto:yin.jones@btinternet.com)

## Committee member changes

At our 2016 AGM we are sad to be saying goodbye to Ann Young, who will be stepping down as a committee member after 10 years. Ann has been absolutely fantastic, providing a different perspective and ensuring that we reach as many families as possible through her work as a cleft nurse. We'll be very sorry to see her go and wish her all the best for the future!

Huge thanks are also due to Andy Keaney, who is stepping down as treasurer after three years balancing the SLASB books. Andy has been a diligent and valuable treasurer and we're thrilled that he has agreed to stay on the committee.

Caroline Evanson, who has been on the committee for two years, has kindly agreed to become our new spreadsheet dynamo and will be taking over from Andy following the 2016 AGM. We wish her luck in her new post.

As a result of these changes, the committee is now down to just five people with six events planned this year and hopes for more in the future! To expand the events and support we offer to families in the SLASB region, we need more members. If you think you would like to volunteer, please do get in touch! No matter what level of time you can offer, we'd love to hear from you.



The 2015-2016 committee with their children, from back row left to right Claire Scargill, Andy Keaney, Carly Brims, Ann Young, Tamsin Pennington and Caroline Evanson